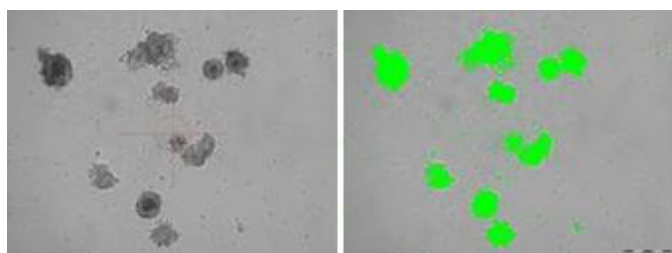
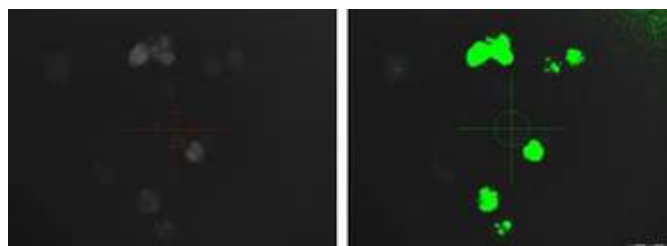


Image recognition

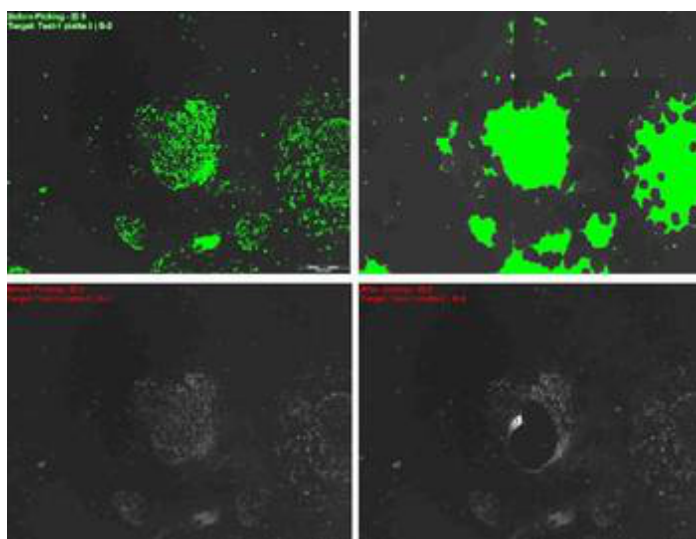
The detection of the target cells is carried out by scanning the culture plate based on pre-defined gray values. The results of the scan can additionally be refined by specific selection and definition of morphological parameters, such as diameter.



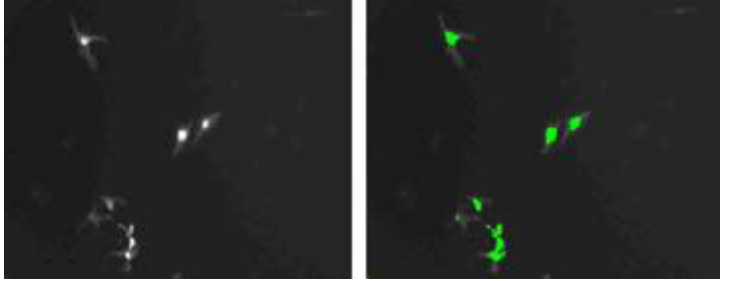
murine stem cell colonies in Matrigel under
brightfield
left before scan / right after scan



murine stem cell colonies in Matrigel under
fluorescence
left before scan/ right after scan



H9-colony observation at fluorescence
illumination: Detection of colonies without



murine mesenchymale Stem cells (mMSC's) at
fluorescence illumination